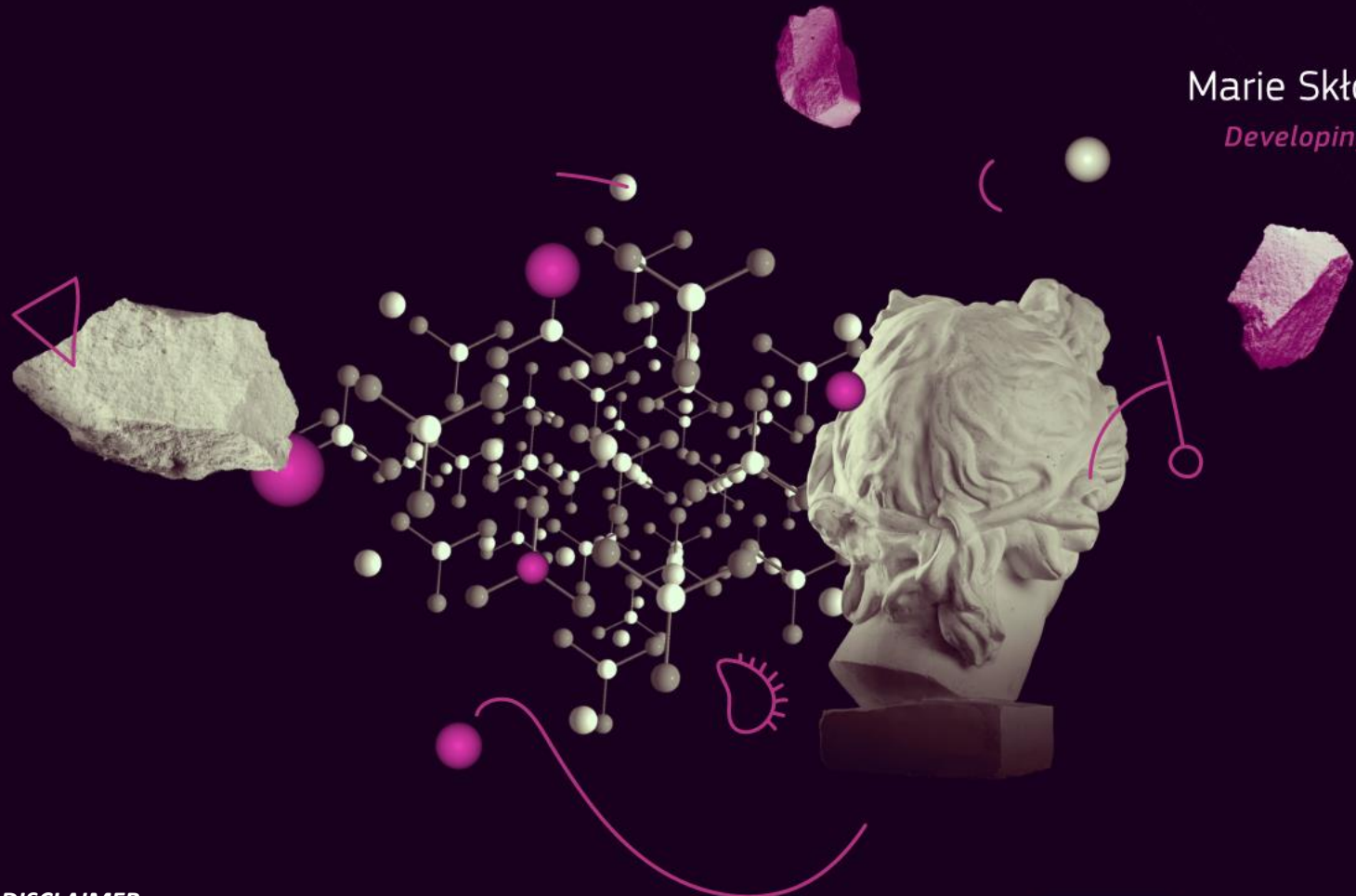




# MSCA

Marie Skłodowska-Curie Actions

*Developing talents, advancing research*



## MSCA Postdoctoral Fellowships - 2024

*Fredrik Olsson Hector*

*European Research Executive Agency (REA)*

*26/06/2024*

**DISCLAIMER:** This presentation is provided for information purposes only and is not intended to replace consultation of any applicable legal sources. Neither the European Commission nor the European Research Executive Agency (or any person acting on their behalf) can be held responsible for the use made of the guidance provided in this document.

Marie Skłodowska-Curie Actions

image source: iStockphoto.com

# The MSCA in Horizon Europe

## Doctoral Networks

*Doctoral programmes  
in and outside  
academia incl. joint &  
industrial doctorates*

## Postdoctoral Fellowships

*Support to excellent  
postdoctoral  
researchers*

## Staff Exchanges

*Support for research  
and innovation staff  
exchanges*

## COFUND

*Co-funding doctoral  
and postdoctoral  
programmes*

## MSCA and Citizens

*Public outreach events  
(Nights)*

**Total indicative budget 2021-2027: €6.6 billion**

# Postdoctoral Fellowships (PF)

Indicative budget (2024):	€ <u>417.18 m</u> (€ 354.6 m for European, € 62.58 m for Global)
Call opening:	<u>23 April 2024</u>
Call deadline:	<u>11 September 2024</u>

**MSCA Postdoctoral Fellowships aim to enhance the creative and innovative potential of researchers holding a PhD, who wish to acquire new skills through advanced training, international, interdisciplinary and inter-sectoral mobility.**

## ***NEW in 2024***

- *higher call budget*
- *higher living and mobility allowances*
- *revised country coefficients (list in WP)*



# Postdoctoral Fellowships (PF): Objectives

## Main Objectives

- Increased set of **research** and **transferable skills** and competences for researchers, leading to improved employability and **career prospects** within academia and beyond
- New mind-sets and approaches to R&I work forged through **international, inter-sectoral** and **interdisciplinary** experience
- **Enhanced networking** and communication capacities with scientific peers, as well as with the general public that will increase and broaden the research and innovation impact
- Increased **alignment of working conditions** for researchers, including quality and sustainability of research training and supervision
- Increased **global attractiveness, visibility and reputation** of the participating organisation(s)
- **Stronger R&I capacity** and output among participating organisations; better transfer of knowledge

# Postdoctoral Fellowships (PF): Objectives

**Employability within  
academia and beyond**

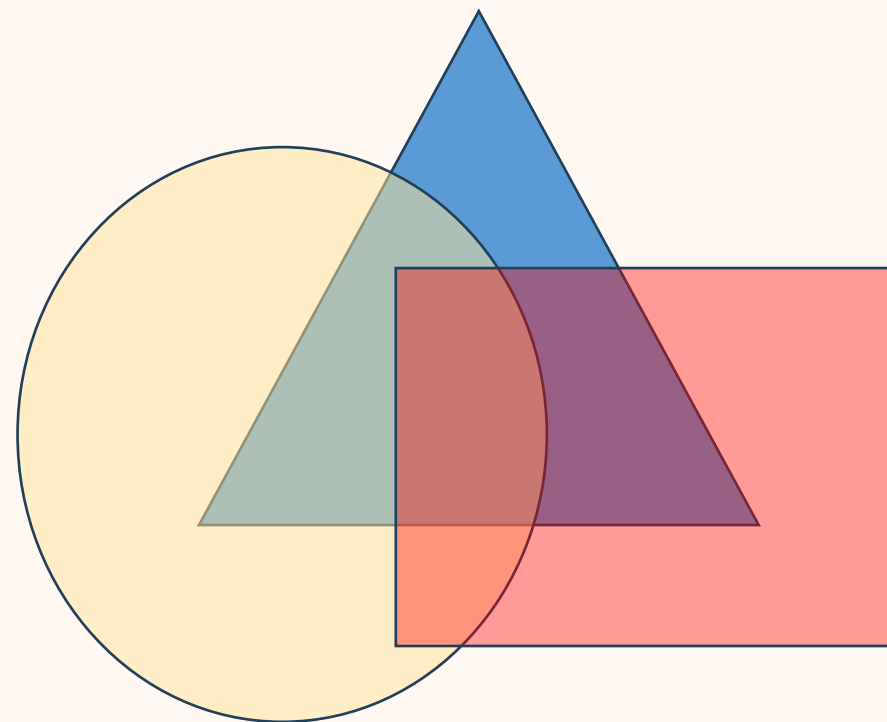




# Postdoctoral Fellowships (PF): Objectives

**International,  
inter-sectoral and  
interdisciplinary  
experience**

**Enhanced networking**



# Postdoctoral Fellowships (PF): Objectives

**alignment of working conditions**





# Postdoctoral Fellowships (PF): Objectives

**Attractiveness,  
visibility,  
reputation and  
stronger R&I capacity of the  
participating organisation(s)**





# European vs Global Fellowships

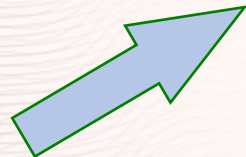
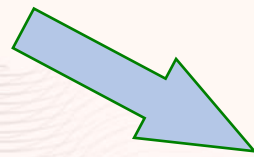
## European Fellowships



EU MS/AC



Third Country



EU MS/AC

Duration: 12-24m

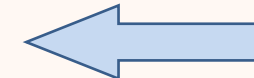
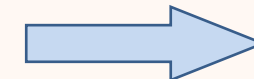
+ Non-Academic Placement  
Max. 6m

## Global Fellowships

Outgoing phase: 12-24m



EU MS/AC



Third Country

Return phase: 12m

Duration: 24-36m



# Postdoctoral Fellowships (PF): Conditions

## Participating organisations\*

- An organisation in a EU Member State or HE Associated Country

## Researchers

- in possession of PhD at the call deadline (or, with a successful defense prior to call deadline)
- for EF: of any nationality; GF: nationals or long-term residents of MS or HE AC\*
- with up to 8 years research experience after PhD (with exceptions: career breaks, work outside research, research outside Europe for reintegrating researchers,...)
- mobility rule: not have resided or have had main activity in the country of the beneficiary (or Third Country host organisation for GF) more than 12 months in the 36 months before call deadline

\* *Specific eligibility criteria for PFs supported by Euratom:*

- *Organisation: legal entity established in an EU Member State or Euratom AC*
- *Researcher: nationals or long-term residents of an EU Member State or a Euratom AC*



# Postdoctoral Fellowships (PF): Conditions

## Duration

- European Fellowships: 12-24 months
- Global Fellowships: 24-36 months (12 to 24-month outgoing phase in a third country\*, followed by a 12-month mandatory return phase in Europe)

**Secondments\*** can be undertaken worldwide, in any sector; for up to 1/3<sup>rd</sup> of total duration (for EF) or up to 1/3<sup>rd</sup> of the outgoing phase (for GF)

**Optional additional placement\*** in the non-academic sector, in an EU MS or HE AC country; for up to six months, taking place at the end of the fellowship (after the standard duration)

*\* Refer to the WP/GFA/official documents for restrictions and details*

# Funding levels (new for 2024)

MSCA Postdoctoral Fellowships  2023-2024	Contributions for the recruited researcher					Institutional unit contributions	
	Per person-month					Per person month	
	Living Allowance	Mobility Allowance	Family Allowance	Long-term leave allowance (if applicable)	Special needs allowance (if applicable)	Research, training and networking contribution	Management and indirect contribution
	<b>€5,990</b>	<b>€710</b>	<b>€660</b>	€6,700 x % covered by beneficiary	Requested unit x (1/number of months)	<b>€1,000</b>	<b>€650</b>

Details available in [WP2023-2025](#), figures apply for 2024-2025

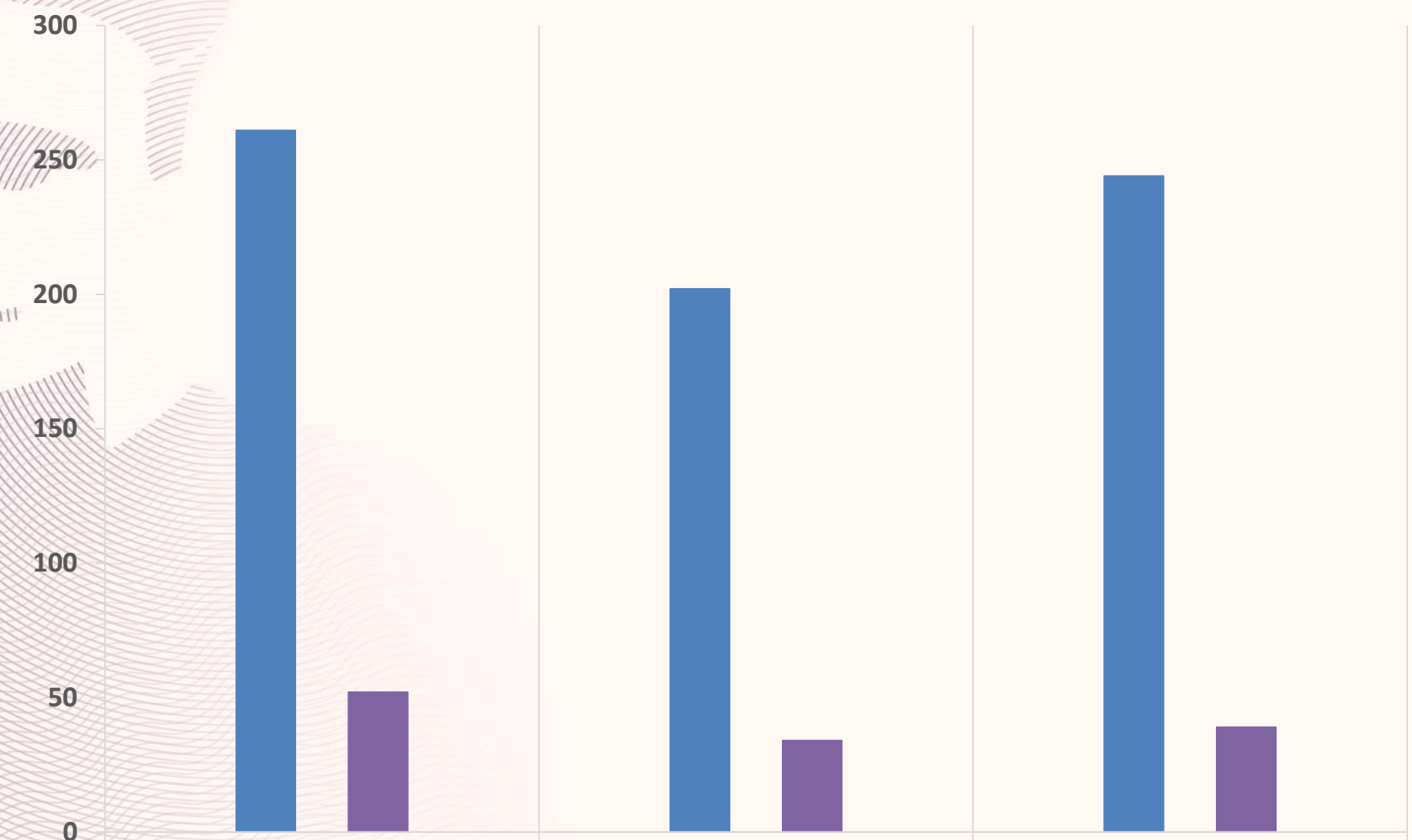
**Living Allowance (gross amount) is corrected by a country correction coefficient**



# Resources and Guidance (2024 Call)

- [Funding & Tenders Portal - MSCA Postdoctoral Fellowships 2024 – call page](#)
- The [European Research Executive Agency \(REA\)](#) publishes a series of essential resources for any applicant:
  - The [guide for applicants](#) is the best starting point for any researcher interested in the scheme
  - [This guide](#) will help you avoid the most common mistakes in Postdoctoral Fellowships proposals
  - To check your research experience, REA has prepared a [self-assessment tool](#) and [guidelines on the calculation of 8-years research experience in Postdoctoral Fellowships under Horizon Europe](#)
  - Proposal templates, evaluation guidelines used by experts and [many other resources](#)
- [MSCA Work Programme](#)
- [Proposal templates](#)
- [FAQs](#)
- The [Horizon Europe Programme Guide](#) : guidance on specific aspects being evaluated
- Evaluators' briefing videos, including on [how to evaluate Open Science in Horizon Europe proposals, how to evaluate dissemination, exploitation, and communication, how to evaluate strategy for intellectual property management](#)
- [MSCA Website](#)
- [Research Enquiry Service](#)
- [National Contact Points](#)

# PROPOSALS FROM UK NATIONALS



■ EF  
■ GF

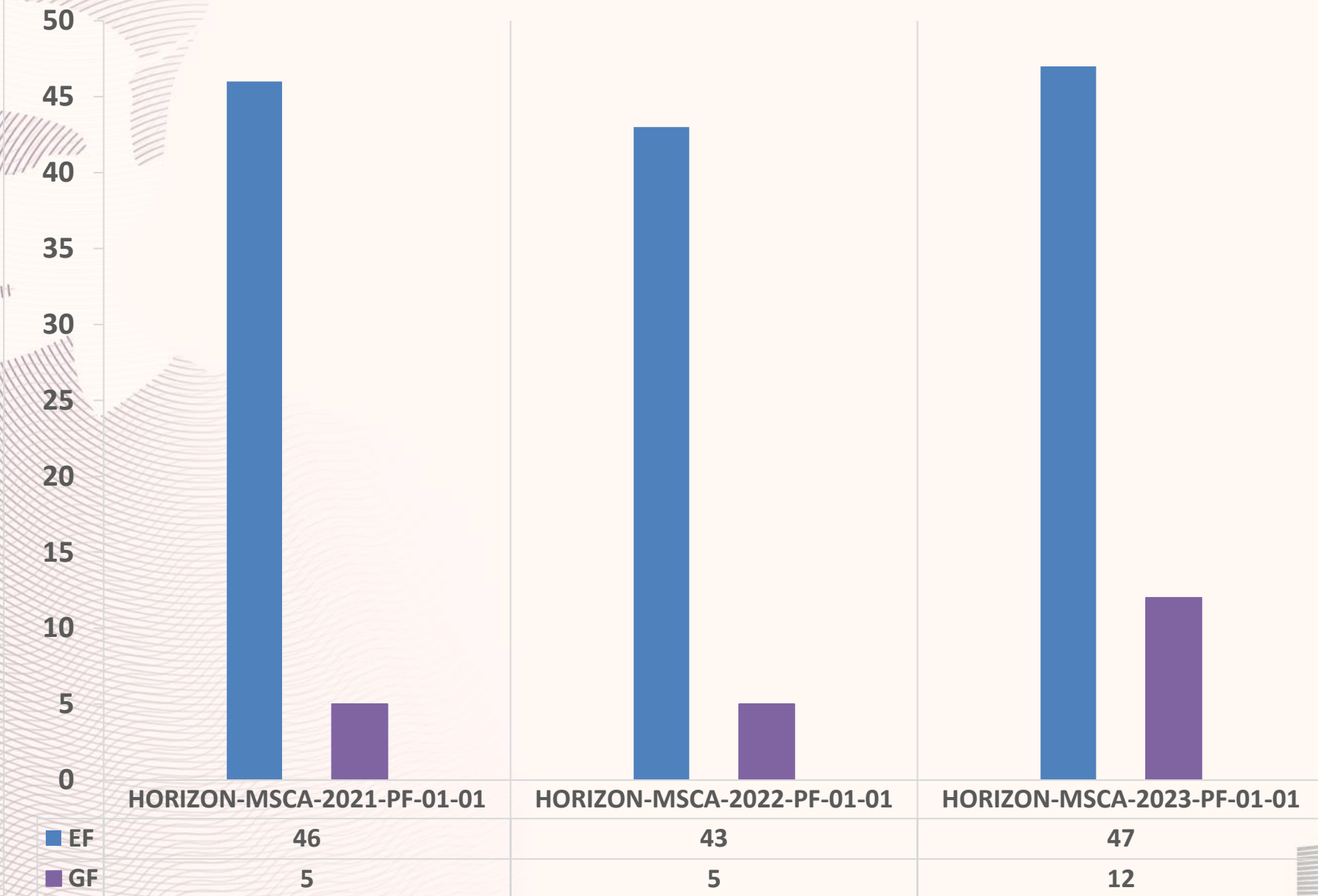
261  
52

202  
34

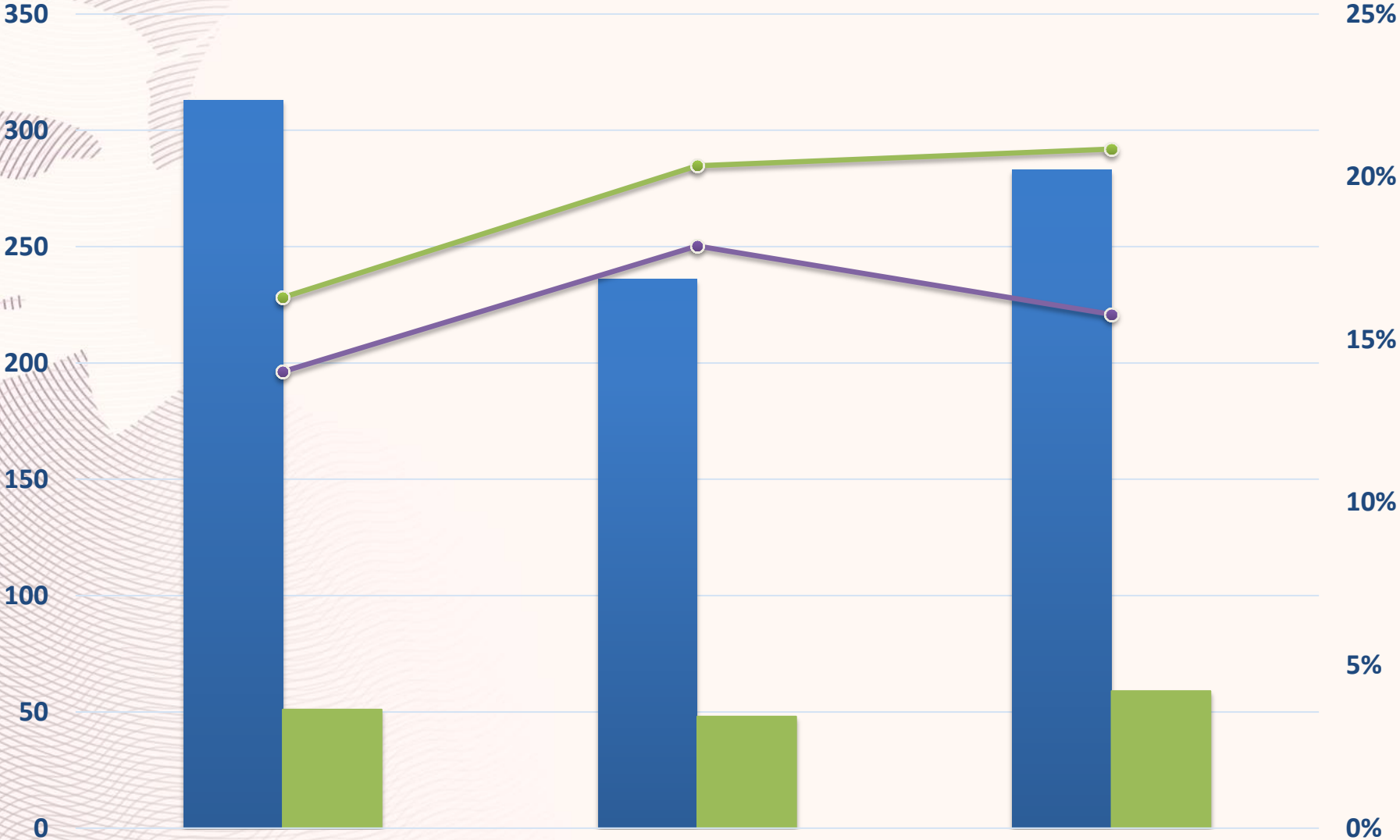
244  
39



## GRANTS (MAIN LIST) FOR UK NATIONALS



# SUCCESS RATE FOR UK NATIONALS

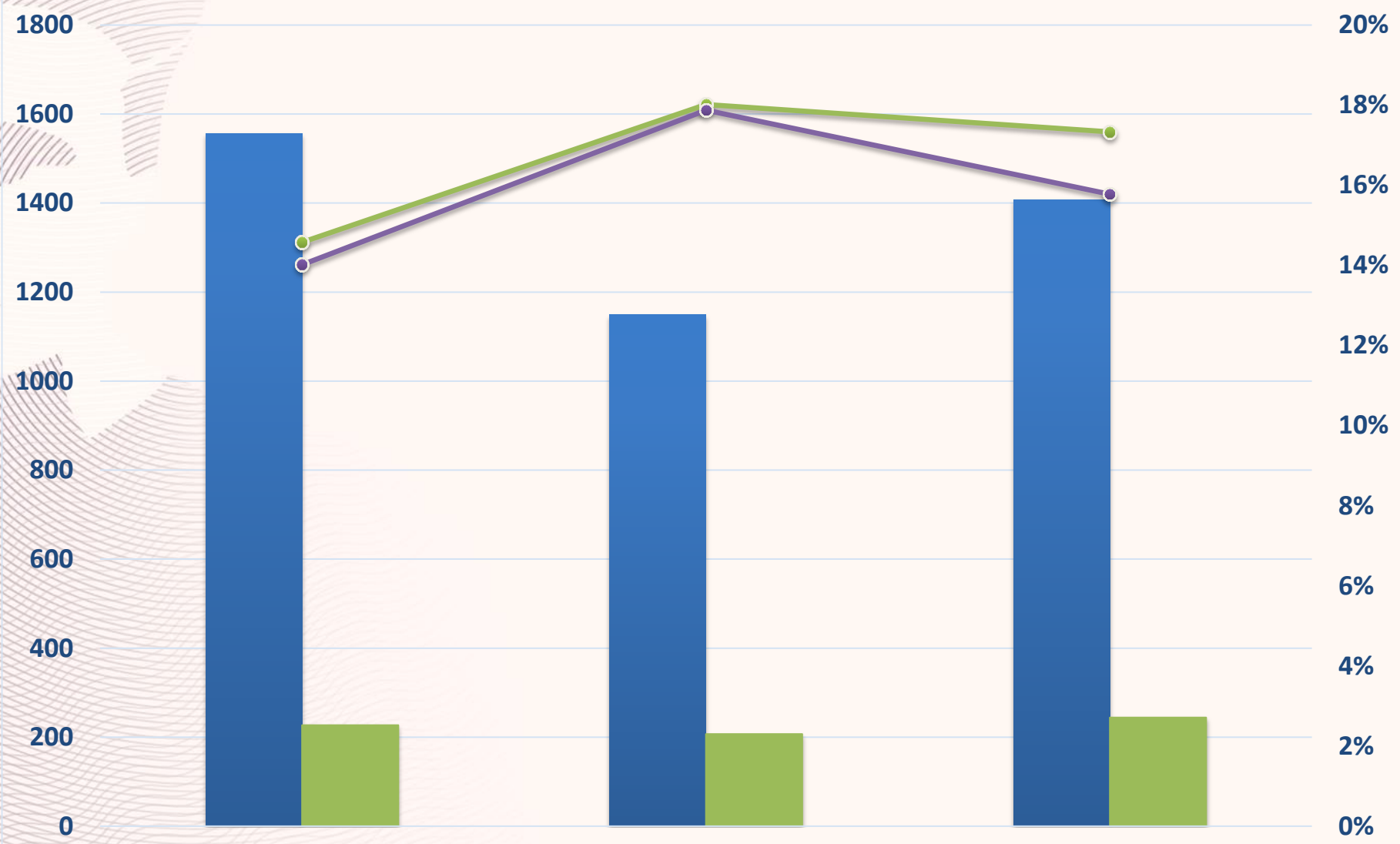


■ Proposals ■ Grants (Main list) ● SUCCESS RATE FOR UK NATIONALS ● Overall Success rate for call



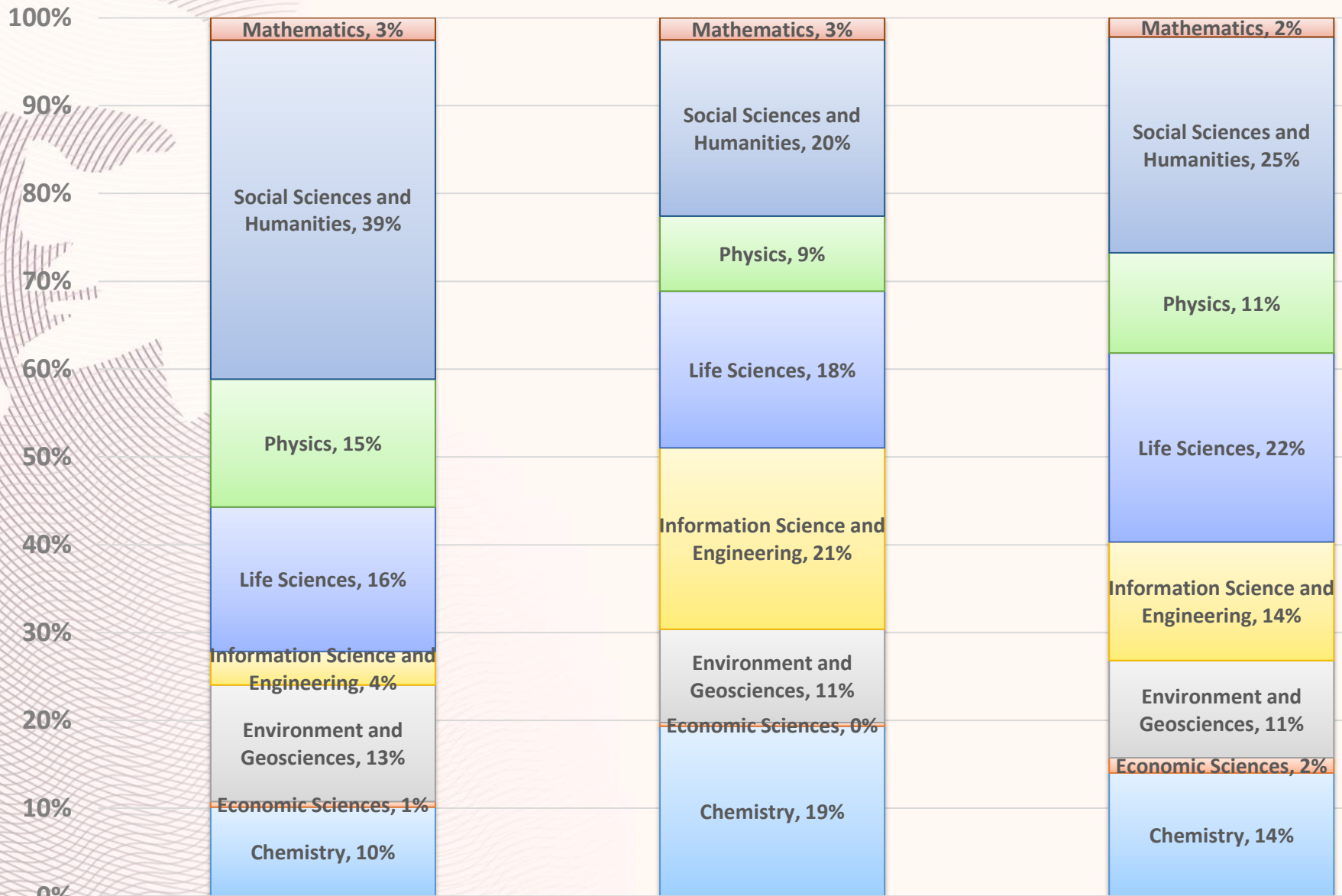


# SUCCESS RATE OF UK HOSTS



■ Proposals ■ Grants (Main list) ● SUCCESS RATE OF UK HOSTS ● Overall success rate for call

## SCIENTIFIC AREAS



Grants (Main list) from UK nationals

Grants (Main list) at UK hosts

All grants





# Thank you

# HorizonEU #MSCA  
@MSCAactions



© European Union 2022

Except where otherwise noted, this presentation is © European Union and is licensed under the CC BY 4.0 license.

